

Smart Infrastructure intelligently connects energy systems, buildings and industries to adapt and evolve the way we live and work.

We work together with customers and partners to create an ecosystem that intuitively responds to the needs of people and helps customers to better use resources.

It helps our customers to thrive, communities to progress and supports sustainable development.

Creating environments that care.
siemens.com/smart-infrastructure

Published by
Siemens Switzerland Ltd

Smart Infrastructure
Global Headquarters
Theriestrasse 1a
6300 Zug
Switzerland
Tel +41 58 724 24 24

For the U.S., published by
Siemens Industry Inc.
100 Technology Drive
Alpharetta, GA 30005
United States

Article no. SI_0195_EN (Status 12/2020)

Subject to changes and errors. The information given in this document only contains general descriptions and/or performance features which may not always specifically reflect those described, or which may undergo modification in the course of further development of the products. The requested performance features are binding only when they are expressly agreed upon in the concluded contract.
© Siemens 2020

Cerberus FIT FC360 – Planning Tool

siemens.com/cerberus-fit



Cerberus FIT FC360 – addressable fire control panels

1-loop panels

- 1 loop or 2 stubs
- Number of addresses: max. 126



Fire control panel (1L, Compact) FC361-ZZ
– Housing: 402x372x132 mm
– Batteries: max. 2x 12 V, 12 Ah
Order no.: S54433-C112-A1

Fire control panel (1L, Comfort) FC361-ZA
– Housing: 402x372x211 mm
– Batteries: max. 2x 12 V, 25 Ah
Order no.: S54433-C111-A1

2-loop panels

- 2 loop or 4 stubs
- Number of addresses: max. 256



Fire control panel (2L, Compact) FC362-ZZ
– Housing: 402x372x132 mm
– Batteries: max. 2x 12 V, 12 Ah
Order no.: S54433-C119-A1

Fire control panel (2L, Comfort) FC362-ZA
– Housing: 402x372x211 mm
– Batteries: max. 2x 12 V, 25 Ah
Order no.: S54433-C120-A1

Shared properties

- Total current capacity: max. 2.5 A
- 4 programmable inputs/outputs (DC 24 V/max. 0.1 A and 0.2 A in total)
- 3 programmable potential-free relay outputs (DC 60 V/max. 2.0 A)
- 2 collective sounder circuits (DC 24 V/max. 0.5 A)
- Auxiliary power output (DC 24 V/max. 0.2 A)

Options



LED indicator (32 zones) FTO3603-Z1
– Visual fire zone indication
– Up to 32 fire zones
Order no.: S54433-B118-A1

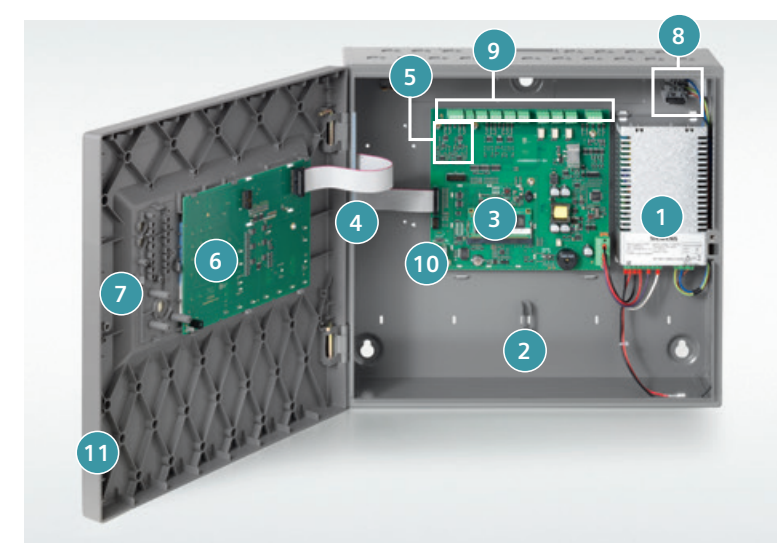
Evacuation module (NL) FTO3601-H1
– Special option for The Netherlands
– Independent control of EVAC zone
– Acc. NEN 2575
Order no.: S54433-B116-A1

Key switch FCA3601-Z1
– Standard key switch to provide level 2 (user) access on panel
Order no.: S54433-N113-A1

Key switch (Nordic) FCA3603-Z1
– Special key switch (Nordic) to provide level 2 (user) access on panel
Order no.: S54433-N115-A1

Control unit

Hardware components



Legend

- | | |
|--|---------------------------------|
| 1 Power supply | 8 Mains fuse |
| 2 Space for batteries | 9 Main board connectors: |
| 3 Mainboard | – 2 collective sounder circuits |
| 4 Output card (4M) (optional) | – 24 V auxiliary outputs |
| 5 Space for RS232/485 module (optional) | – 4 programmable inputs/outputs |
| 6 User interface (PMI) | – 3 programmable relay outputs |
| 7 Space for options: | – Loop connector |
| – Evacuation module (NL) | 10 Ethernet connector |
| – LED indicator (32 zones) | 11 Detachable door |
| – Key switch/key switch (Nordic) | |



Output card (4M) FCA3602-Z1
– 4 configurable monitored outputs (DC 24 V)
– Output current per output: 1.0 A
– Max. current of output card: 2.0 A
Order no.: S54433-A114-A1

RS232 module (isolated) FCA2001-A1
– Communication module for peripheral devices with RS232 interface (e.g. event printer DL3750+)
Order no.: A5Q00005327

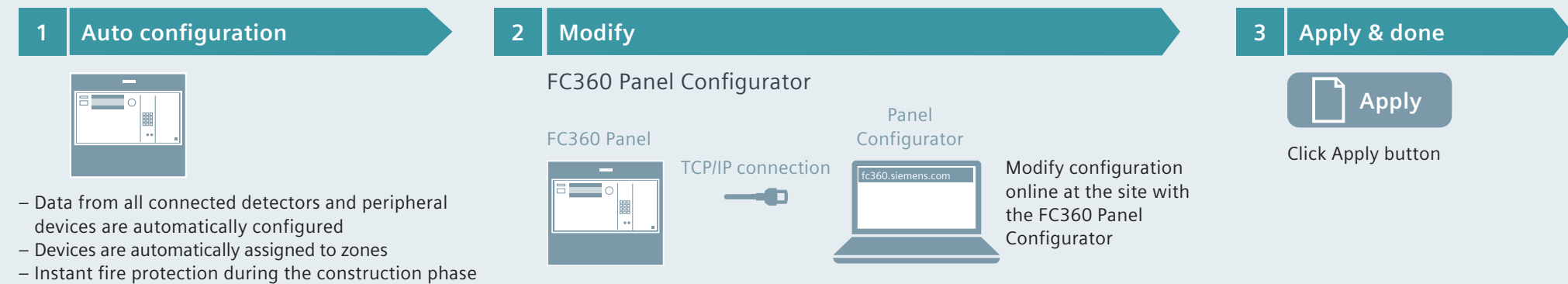
RS485 module (isolated) FCA2002-A1
– Communication module for peripheral devices with RS485 interface
Order no.: A5Q00009923

Note: Unit can be powered from the integral power supply or from an additional external power supply.

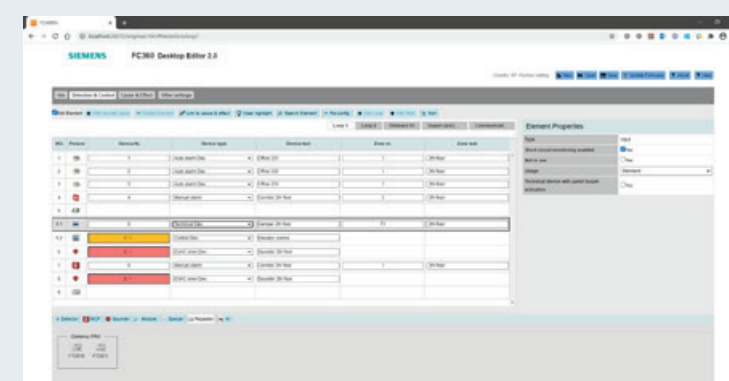
FC360 Panel Configurator (online)

Panel configuration in three easy steps.

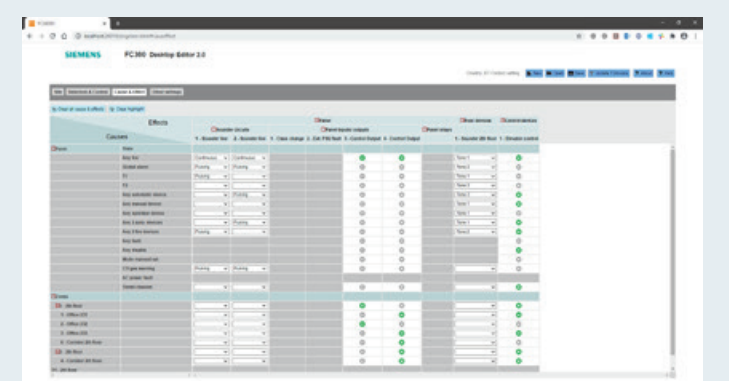
The online tool is used to configure the panel on site. The panel has an integrated Web server that can be accessed with a Web browser. No additional software is needed. The TCP/IP connection to the panel is established via the Web address fc360.siemens.com.



Detection and control view



Cause and effect matrix



The FC360 configuration tool is simple to understand and use. The connected devices are listed in a table in their order of wiring, allowing the user to easily visualize the devices as installed. Outputs and sounders can be assigned into one of 32 control or evacuation zones and an appropriate description text (e.g. "door release") can be added for more clarity.

Most systems require all alarming devices and control outputs to operate with any fire. This operation is available by default. Where more complex controls are required, the FC360's unique cause-and-effect matrix makes any required changes easy and logical.

FC360 Desktop Editor (offline)

The FC360 Desktop Editor is a tool for viewing the system's configuration offline as well as making text or cause-and-effect changes.

In addition, the tool provides installers with self-learning opportunities where they can create their own "virtual" system. This quickly builds solid expertise and experience and reduces training costs and effort.

Download the FC360 Desktop Editor



Alarming highlights

In the event of a fire it is essential to alert and evacuate people as fast as possible. A wide product portfolio range offers alarm devices for acoustic and optical alarming. All devices are loop powered and constantly monitored.

Sounder

The sounder creates an acoustic alarm signal in case of an event. All devices offers a broad range of tone patterns.
The acoustic perception is outstanding because all tones are synchronized.
– Certified for acoustic alarming according EN 54-3
– 3 different sound levels are selectable (minimum / medium / maximum)
– 16 integrated tone patterns

Voice

The devices with voice messages are able to play a precise voice instruction for different events in the building. With help of a voice message, the evacuation process is faster and the building occupants receive clear instructions.
– Certified for acoustic alarming according EN 54-3.
– Languages (15 integrated, 2 customizable)
– Message categories (3 predefined): EVAC FIRE, EVAC EMERGENCY, TEST

Languages (15 integrated, 2 customizable)

– English	– Finnish
– German	– Danish
– French	– Polish
– Italian	– Portuguese
– Spanish	– Turkish
– English UK	– Russian
– Dutch	– Custom language 1
– Sweden	– Custom language 2
– Norwegian	

Customer-specific voice message

- Order the service "Conversion of voice message FD55227" to create a customer-specific audio library
- Order customer-specific devices (...C) with custom audio library ID

Beacon

Addressing two senses – an optical and an acoustical signal – speeds up the alert and evacuation process. We increase the awareness of the optical signal with a high flash intensity and a very short pulse length. The device has multiple options for brightness which can be adjusted according to the room size.
– Certified for optical alarming according EN 54-23
– Additional light intensity setting (supplementary optical indication) designed for system extensions or migration.

Wall devices

Category W – wall mounting

● White LED	● Red LED
High: W-3.2-10	High: W-2.8-8.8
Mid: W-2.4-7.5	Mid: W-2.4-7.5
Low: O-2-6.2	Low: O-2-6.2

O – Open category: Wall mounted, cubic coverage as category W

Ceiling devices

Category C – ceiling mounting

● White LED	● Red LED
High: O-4-15	High: C-3-12
Mid: C-3-12	Mid: C-3-10
Low: O-2.5-6.5	Low: O-2.5-6.5

O – Open category: Ceiling mounted, cylindrical coverage as category C

Cerberus FIT FC360 – compatible C-NET devices

Fire control panel FC361-ZZ
Order no.: S54433-C112-A1

Fire control panel FC361-ZA
Order no.: S54433-C111-A1

Fire control panel FC362-ZZ
Order no.: S54433-C119-A1

Fire control panel FC362-ZA
Order no.: S54433-C120-A1

Fire detectors

Detector base DB721
– Screw clamp terminals
Order no.: S54319-F11-A1

Detector base DB722
– Screwless terminals
– Integrated rubber seal
Order no.: S54319-F19-A1

Flame detector base FDFB291
Order no.: ASQ00003310

Linear smoke detector base FDLB291
Order no.: ASQ00003941

Flame detector FDF241-9
– For inside and outside applications
– Three infrared sensors
Order no.: ASQ00003006

Linear smoke detector FDL241-9
Order no.: ASQ00002298

Detector base DB721
Order no.: S54319-F11-A1

ASA neural fire detector OOH740
Order no.: S54320-F7-A3

ASA neural fire and CO detector OOH740
Two optical sensors, two heat sensors, one carbon monoxide sensor, three parameter sets
Order no.: S54320-F8-A3

Multi-sensor fire detector OH360
Combined optical and thermal sensors, one parameter set
Order no.: S54310-F102-A1

Smoke detector OP360
One parameter set
Order no.: S54310-F101-A1

Heat detector HI360 (max + RoR)
Two parameter sets (rate-of-rise and static)
Order no.: S54310-F104-A1

Heat detector HI722 (max)
One parameter set (static)
Order no.: S54310-F3-A1

Multi-sensor fire detector OH720
Combined optical and thermal sensors, two parameter sets
Order no.: S54310-F2-A1

Smoke detector OP720
Two parameter sets
Order no.: S54310-F1-A1

Heat detector HI720 (max + RoR)
Two parameter sets (rate-of-rise and static)
Order no.: S54310-F4-A1

Flame detector FDF241-9
– For inside and outside applications
– Three infrared sensors
Order no.: ASQ00003006

Linear smoke detector FDL241-9
Order no.: ASQ00002298

Detector base DB721
Order no.: S54319-F11-A1

ASA neural fire detector OOH740
Order no.: S54320-F7-A3

Air sampling smoke detection kit FDBZ290
Order no.: S54319-S32-A1

Zone module FDCI723
1 collective or conventional detector line

Long-distance reflector DLR1191 (Prism)
For distances between 20 and 100 meters
Order no.: BPZ:4787710001

Power supply FP120
Order no.: S54400-S122-A1

Housing FDC221 IP65
Order no.: S54312-F3-A1

Shared properties FT2010 and FT2011:
– Backlit display with plain text (6 lines of 40 characters each)
– Power supply and communication (individual addressed) via C-NET, additional DC 24 V feed possible
– 207x282x79 mm (HxWxD)
– Max. 3 FT2010/FT2011 per FC361

Floor repeater terminal FT2010-A1
Order no.: ASQ00014104

Floor repeater display FT2011-A1
Order no.: ASQ00017706

Alarm indicator (addressable) FDCAI221
Order no.: S54370-F10-A1

Detector base accessories

Detector base seal RS720
Order no.: S54319-F8-A1

Designation plate FDBZ291
Order no.: ASQ00002621

Detector locking device LP720
Order no.: S54319-F9-A1

Base attachment BA720
Order no.: S54319-F20-A1

Base attachment wet BA721
Order no.: S54319-F29-A1

Detector heating FDBH291
Order no.: ASQ00004439

Protection cage DBZ1194
Order no.: BPZ:4677110001

Alarm indicator FDCAI92
Order no.: S54370-F3-A1

Alarm indicator FDCAI91
Order no.: S54370-F9-A1

Alarm indicator FDCAI93
Order no.: S54370-F5-A1

Additional frame AI330
Order no.: BPZ:3169430001

Alarm equipment for audible and visible alarming

Sounder base DBS720
Sound level: 88 dBA/1 m
Order no.: S54319-F5-A1

Base (wall mounting) FDBZ26-R
Order no.: S54364-B1-A1

Base (wall mounting) FDBZ26-W
Order no.: S54364-B2-A1

Base deep (wall mounting, IP65) FDBZ27-R
Order no.: S54364-B3-A1

Base deep (wall mounting, IP65) FDBZ27-W
Order no.: S54364-B4-A1

Base deep (ceiling mounting) FDBZ28
Order no.: S54364-B5-A1

Base deep (ceiling mounting) FDBZ29
Order no.: S54364-B6-A1

Sounder FDS364-R
Housing red
Sound level: maximum only
Order no.: S54364-F101-A1

Voice sounder FDS225-R
Housing red
Order no.: S54364-F3-A1

Sounder FDS364-W
Housing white
Sound level: maximum only
Order no.: S54364-F102-A1

Sounder FDS224-R
Housing red
Order no.: S54364-F1-A1

Sounder FDS224-W
Housing white
Order no.: S54364-F2-A1

Sounder beacon FDS366-RR
Housing red / LED red
Sound level: maximum only
W-2.4-7.5
Order no.: S54364-F105-A1

Voice sounder FDS225-W
Housing white
Order no.: S54364-F4-A1

Sounder beacon FDS226-RR
Housing red / LED red
O-2.6-2 / W-2.4-7.5 / W-2.8-8.8
Order no.: S54364-F5-A1

Sounder beacon FDS226-RW
Housing red / LED white
O-2.6-2 / W-2.4-7.5 / W-3.2-10
Order no.: S54364-F6-A1

Sounder beacon FDS226-WR
Housing white / LED red
O-2.6-2 / W-2.4-7.5 / W-2.8-8.8
Order no.: S54364-F7-A1

Sounder beacon FDS226-WW
Housing white / LED white
O-2.6-2 / W-2.4-7.5 / W-3.2-10
Order no.: S54364-F8-A1

Standard voice messages

Voice sounder beacon FDS227-RR
Housing red / LED red
O-2.6-2 / W-2.4-7.5 / W-2.8-8.8
Order no.: S54364-F9-A1

Voice sounder beacon FDS227-RW
Housing red / LED white
O-2.6-2 / W-2.4-7.5 / W-3.2-10
Order no.: S54364-F10-A1

Voice sounder beacon FDS227-WR
Housing white / LED red
O-2.6-2 / W-2.4-7.5 / W-2.8-8.8
Order no.: S54364-F11-A1

Voice sounder beacon FDS227-WW
Housing white / LED white
O-2.6-2 / W-2.4-7.5 / W-3.2-10
Order no.: S54364-F12-A1

Customized voice messages

Voice sounder beacon FDS227-RR-C
Housing red / LED red
O-2.6-2 / W-2.4-7.5 / W-2.8-8.8
Order no.: S54364-F9-A2

Voice sounder beacon FDS227-RW-C
Housing red / LED white
O-2.6-2 / W-2.4-7.5 / W-3.2-10
Order no.: S54364-F10-A2

Voice sounder beacon FDS227-WR-C
Housing white / LED red
O-2.6-2 / W-2.4-7.5 / W-2.8-8.8
Order no.: S54364-F11-A2

Voice sounder beacon FDS227-WW-C
Housing white / LED white
O-2.6-2 / W-2.4-7.5 / W-3.2-10
Order no.: S54364-F12-A2

Conversion of voice message FDS5227
Service to convert custom audio message text
Order no.: L54364-Y1-A1

Manual call points and accessories

Manual call point FDM365-RP
Resettable, available in red, and can be used for flush mounting
Order no.: S54311-F111-A1

Manual call point FDM221
Standard, available in different colors
Order no.: ASQ00012020

Manual call point FDM225
Resettable, available in red, and can be used for flush mounting
Order no.: ASQ00013434

Manual call point FDM226
Resettable and IP66, available in red
Order no.: ASQ00013436

Manual call point FDM231-RR
Standard, available in red
Order no.: S54311-B14-A1

Manual call point FDM224
IP44 or IP64, with direct alarm actuation, available in different colors
Order no.: ASQ00009392

Manual call point FDM224
IP44 or IP64, with indirect alarm actuation, available in different colors
Order no.: ASQ00003087

Manual call point with resettable plastic element FDM365-RP
Order no.: S54311-F111-A1

Manual call point with resettable plastic element FDM225-RP
Order no.: ASQ00012020

Manual call point with resettable plastic element incl. back box FDM226-RP
Order no.: ASQ00013436

Manual call point complete
Order no.: S54311-F11-A1

Manual call point with resettable plastic element FDM225-RG
Order no.: ASQ00013434

Manual call point with glass plate incl. back box FDM226-RG
Order no.: ASQ00013435

Electronic switching unit FDM221
Order no.: ASQ00002451

Electronic switching unit incl. key FDM231
Order no.: S54311-B14-A1

Electronic switching unit FDM224
Order no.: ASQ00009392

Electronic switching unit FDM223
Order no.: ASQ00003087

Housings with glass and key (FDM224 and FDM223):
Housing red FDMH293-R
Order no.: ASQ00004023

More color options (yellow, green, blue and orange) are available

Housing red FDMH297-R
Order no.: S54311-B7-A1

Accessories (for FDM224 and FDM223):
Protection seal DMZ1197-AD
Order no.: BPZ:5470680001

Protective cover DMZ1197-AC
Order no.: BPZ:5223550001

Locking plug M20 (1 hole)
Order no.: ASQ00006735

Accessories:
Back box FDMH295-R
Order no.: ASQ00013437

Protective cover FDMC291
Order no.: ASQ00001644

Back box with holes and grommet FDMH295-S
Order no.: ASQ00013438

Protective cover FDMC295
Order no.: ASQ00013440

Back box FDMH295-R
Order no.: ASQ00013437

Protective cover FDMC295
Order no.: ASQ00013440

Back box with holes and grommet FDMH295-S
Order no.: ASQ00013438

Protective cover FDMC295
Order no.: ASQ00013440

Back box FDMH295-R
Order no.: ASQ00013437

Protective cover FDMC295
Order no.: ASQ00013440

Back box with holes and grommet FDMH295-S
Order no.: ASQ00013438

Protective cover FDMC295
Order no.: ASQ00013440

Back box FDMH295-R
Order no.: ASQ00013437

Protective cover FDMC295
Order no.: ASQ00013440

Back box with holes and grommet FDMH295-S
Order no.: ASQ00013438

Protective cover FDMC295
Order no.: ASQ00013440

Mounting example

With detector
Detector base DB721

Without detector
Base (ceiling mounting) FDBZ28

Sounder beacon base FDSB226-WR

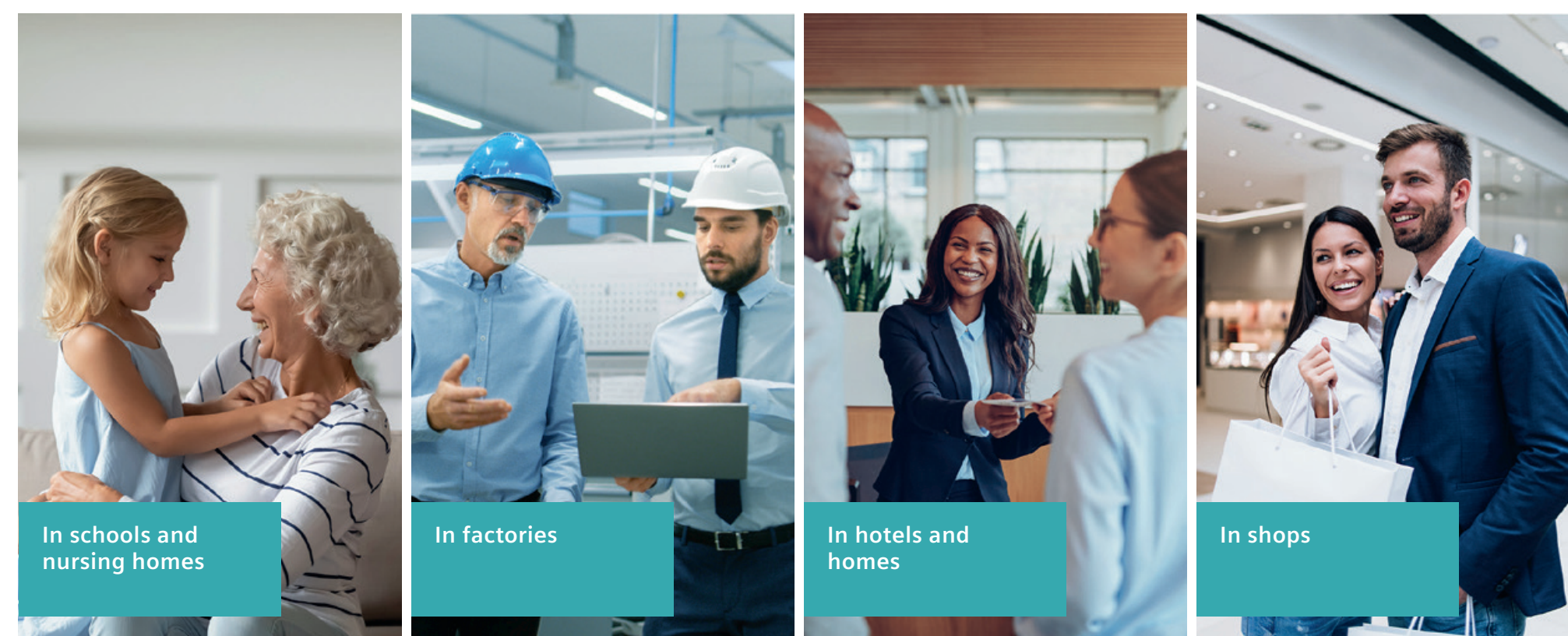
Blanking plate FDBZ298
Order no.: S54364-B8-A1

Legend

Ready-to-go Cerberus FIT devices

C-NET

Cerberus FIT FC360 – application examples



- Benefits at a glance**
- Maximized fire safety**
 - Reliable and early detection
 - LPCB approved to EN 54-2, EN 54-4, EN 54-13
 - Fast and safe evacuation with voice sounders
 - Easy to use**
 - Auto-configuration (plug & play)
 - License free engineering tool
 - Cost and time efficient**
 - Training efforts reduced
 - Faster engineering with pre-configured devices and build-in engineering tool

ASA parameter sets for diverse application areas

Faster fire detection with ASAtechnology
Heat detectors are needed in many areas due to the potential for false alarms. However, heat detection provides significantly less protection. The ASA neural fire detector OOH740 with its dual optical chamber design allows advanced smoke detection to be offered where others can only offer heat detection.

- Two IR light sources
- Dispersion of light rays by smoke particles
- IR receiver
- Patented labyrinth
- Temperature sensors
- CO sensor for OOH740

Contact your local sales office for more information or application support.

Selectable parameter sets:

- Fast Response**

 - Areas where speed of detection is the priority and where there are few false alarm sources
 - EN 54-27-approved detection for air-handling ducts in conjunction with air sampling smoke detection FDBZ290

Balanced

 - Provides a good balance between effective smoke detection and false alarm resistance
 - Ideal for spaces where transitory false alarm sources are expected
 - Application examples: standard hotel and nursing home bedrooms

Suppression

 - Areas requiring smoke detection where a high number of false alarm sources may be expected, including steam, cooking, cigarette smoke, aerosols, welding, etc.
 - Application examples: kitchens, workshops

Separate CO sensor

 - Provides fire-independent detection of toxic carbon monoxide due to incomplete oxidation from exhaust gases, defective gas heating, cooking appliances or chemical and production-related processes
 - Application examples: hotel garages, nursing homes, shared housing