

## The evolution in Energy Management

# Control

# VMU-C/Y, Em<sup>2</sup>

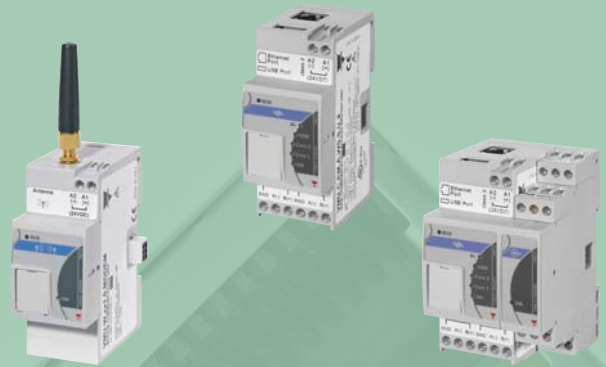
## The evolution in Energy Management

The VMU-C EM is the ideal web-server based solution for monitoring small to medium size installations. With its integrated M2M functionalities it is capable of automatically transferring data via FTP, HTTP or MODBUS/TCP to a remote server where a SCADA, BMS or other specific database software is running. The VMU-C EM is also the gateway at the core of distributed architectures based on VMU-Y EM and Em<sup>2</sup>-Server data aggregation servers, allowing to manage multi-site installations.

The VMU-C EM gathers data from:

- Energy meters
- Power analysers
- VMU Series I/O modules

By combining VMU-C EM with VMU-Y EM or Em<sup>2</sup>-Server multisite management solutions it is possible to remotely manage portfolios of installations.



## Monitoring system for Energy Management

### VMU-C EM

Integrated web-server unit capable of monitoring up to 32 meters and managing the following data:

- Energy (kWh,kvarh) and instantaneous variable data (V,A,W,var,VA,PF,Hz,THD) with setpoints and datalogger
- Temperature, analogue and pulse rate inputs (with scaling capability)
- Digital input status
- Alarms via Web, email or SMS
- Dual tariff
- Reports in Excel compatible format

All the data of the monitored plant is available via:

- Web-Surfing
- HTTP web surfing
- HTTP on-demand polling
- FTP scheduled data-pushing
- Modbus/TCP (slave function)
- Carlo Gavazzi's DP (data push protocol) in combination with VMU-Y EM and Em<sup>2</sup>-Server data aggregation solutions.
- If wired internet is not available, the VMU-W compact and integrated 3G mobile modem is available.

### Energy meters and power quality analyzers

Carlo Gavazzi provides a full range of instruments to be used in conjunction with the VMU-C EM.

- Mounting: both DIN-rail or panel mounting available
- Compact size
- Current measurement: direct up to 65 A, by 5A current transformers, by 0.333 V current sensors
- Optional digital inputs for utility (gas, water) metering, pulse outputs or relay outputs available
- MID certified versions available for fiscal metering
- Full range of solid and split-core current transformers available

### VMU Series optional modules

Additional modules can be added, providing further information:

- Temperature measurements
- Scalable analogue and pulse rate inputs
- Digital inputs and digital outputs

## Why the VMU-C EM is the ideal Energy Management solution

**How much money will you lose if your plant stops because of electrical problems?**

**To ensure everything is running effectively, you need a monitoring solution.**

The electrical installation is one of the most important systems in any facility, from a production plant to a commercial building.

An unexpected fault can lead to serious damage and/or to a very expensive stop in production.

You can protect your business if:

- you meet the installation limits;
- you know the system is working properly;
- you identify any decrease in performance so as to plan any maintenance before a fault occurs.

**How much money will you save if your utility contract is based on your actual needs?**

**To ensure you optimise your electrical contract you need a monitoring solution.**

The electrical utility contract should be tailored to the exact needs of your facility. In order to avoid excessive expense, or penalties for exceeding the limits of the contract, you can negotiate a well calibrated contract if:

- you know the details of your consumption by production load, time, season, etc.;

- you identify in detail where the consumption takes place within your plant;
- you are able to not exceed the contractual terms (maximum power demand, etc.);
- Energy efficiency optimization targets are strong drivers in any Country. Carlo Gavazzi solution for Energy monitoring helps you to implement specific policies for matching your energy efficiency benchmarks.



## The VMU-C EM and its optional I/O modules: just to make it easier

The VMU-C EM is modular and the VMU series modules can be added by connecting them via their internal bus: up to one environment variable unit (VMU-P) and up to three I/O units (VMU-O).

If some of the VMU modules are needed remotely, up to ten new arrays can be connected via RS485 using a master module, VMU-M. All the web-server functionalities are ready on your browser if wired internet is available. The VMU-W optional 3G modem is available for mobile Internet connection, in the case wired Internet is not available.



### Advantages

- No need for a dedicated PC for monitoring.
- No crash problems which lead to data loss.
- No compatibility problems due to different operating systems, different languages, libraries, etc.
- Polling device, datalogger, Ethernet gateway in a single, very compact, unit.
- Modular concept for additional input/output whenever needed.
- Optional modular modem for 3G mobile Internet connection.



# VMU-C EM

## The evolution in Energy Management

An integrated wired or wireless Web-Server and Web-Service solution

### The memory



Since plant data are very important, VMU-C EM dedicates 4 GB of memory to secure data storage. VMU-C provides also a micro SD slot (up to 32 GB SDHC cards) and a hot-swap USB interface (for direct memory stick connection) on the top of the unit for:

- plant configuration backup and restore;
- plant database backup and restore.

### Ethernet and mini USB



The Ethernet interface allows to operate and configure the VMU-C, by means of LAN or direct connection to a PC, thanks to the integrated web-interface. In the case Ethernet cannot be accessed, the mini USB can be connected to a PC .

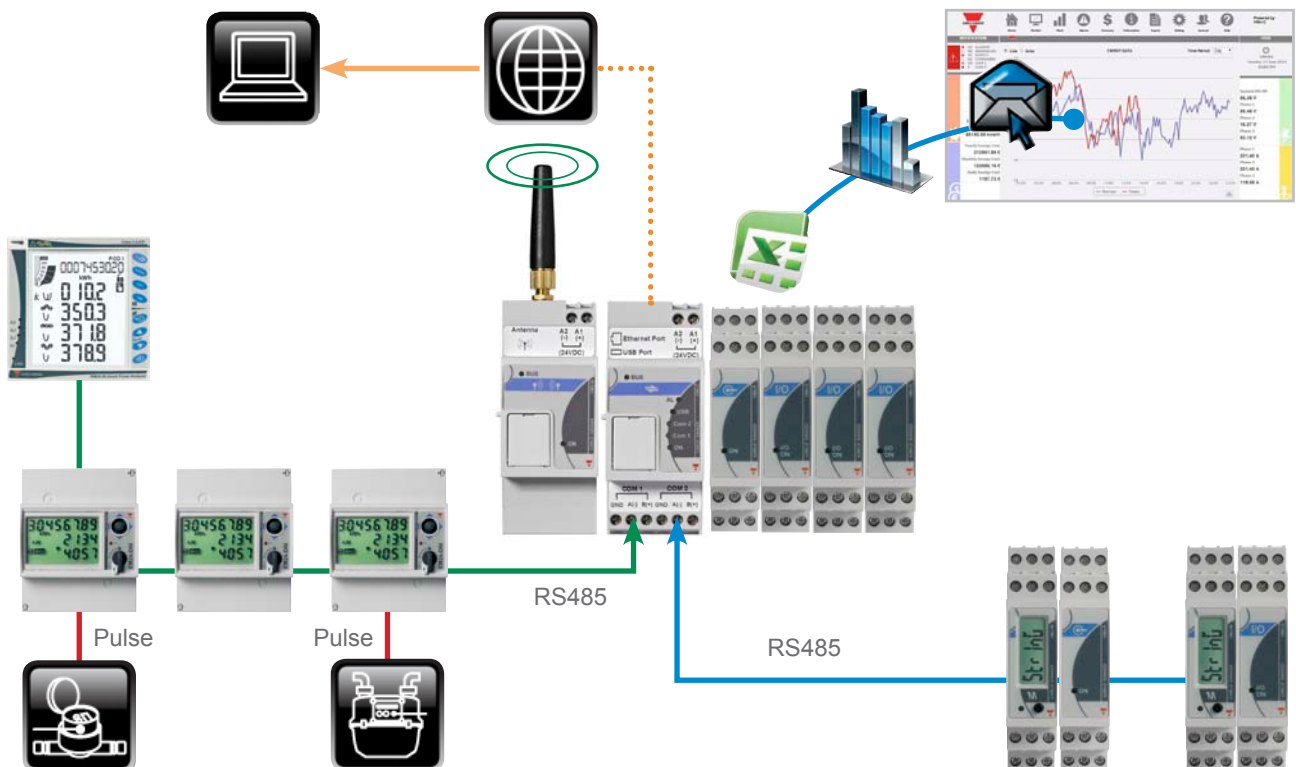
### Mobile Modem



Where wired Internet access is not available, Carlo Gavazzi provides a specific mobile modem, the VMU-W, to be added to the VMU-C which transforms the system into the ideal monitoring solution for any remote application.

## Monitoring solution based on web-server communication capability

Example of communication architecture with wired Internet access (only with “VMU-C”) unit or, where wired Internet, is not available, with additional mobile GPRS-EDGE-UMTS-HSPA “VMU-W” plug-in unit.



## Web-server communication

### Examples of VMU-C EM pages



The home page allows the following information to be available at a glance:

- Energy consumption information (active and reactive power and energy);
- costs information (yearly, monthly and daily expenses);
- instantaneous 3-phase variables of the plant (voltages and currents).

The main chart displays the present day's total energy consumption of the plant Vs. the previous day's.



The consumption of each energy meter can be analysed on a daily, monthly or annual basis.

In the same section information acquired by pulses from the gas, water or remote heating meters, and also the analogue and environmental variables acquired by the VMU modules, can be displayed and analysed.



The logged instantaneous variables relevant to the main meter, and so to the whole electrical installation, can be analysed on a daily, monthly or annual basis.

The variables can be monitored by specific setpoints. In the case of problems or faults, it is possible to analyse the plant's history before the event, so as to understand the relevant reasons and act accordingly.



All the real-time variables of any meter can be displayed on the web-browser. This means being on-site and looking directly at any meter display: the whole plant is completely under control.



The database, including all the history of the plant, can be accessed to get a set of data in a defined time period. The data is then available in Excel compatible format for further analysis by the user.

# VMU-Y EM

## The evolution in Energy Management

### Embedded solution for multi-site applications

VMU-Y EM allows to aggregate information replicated by up to 10 VMU-C EM units within a single centralized database; information may be accessed by users from wherever by using a standard web-browser.

#### Embedded solution



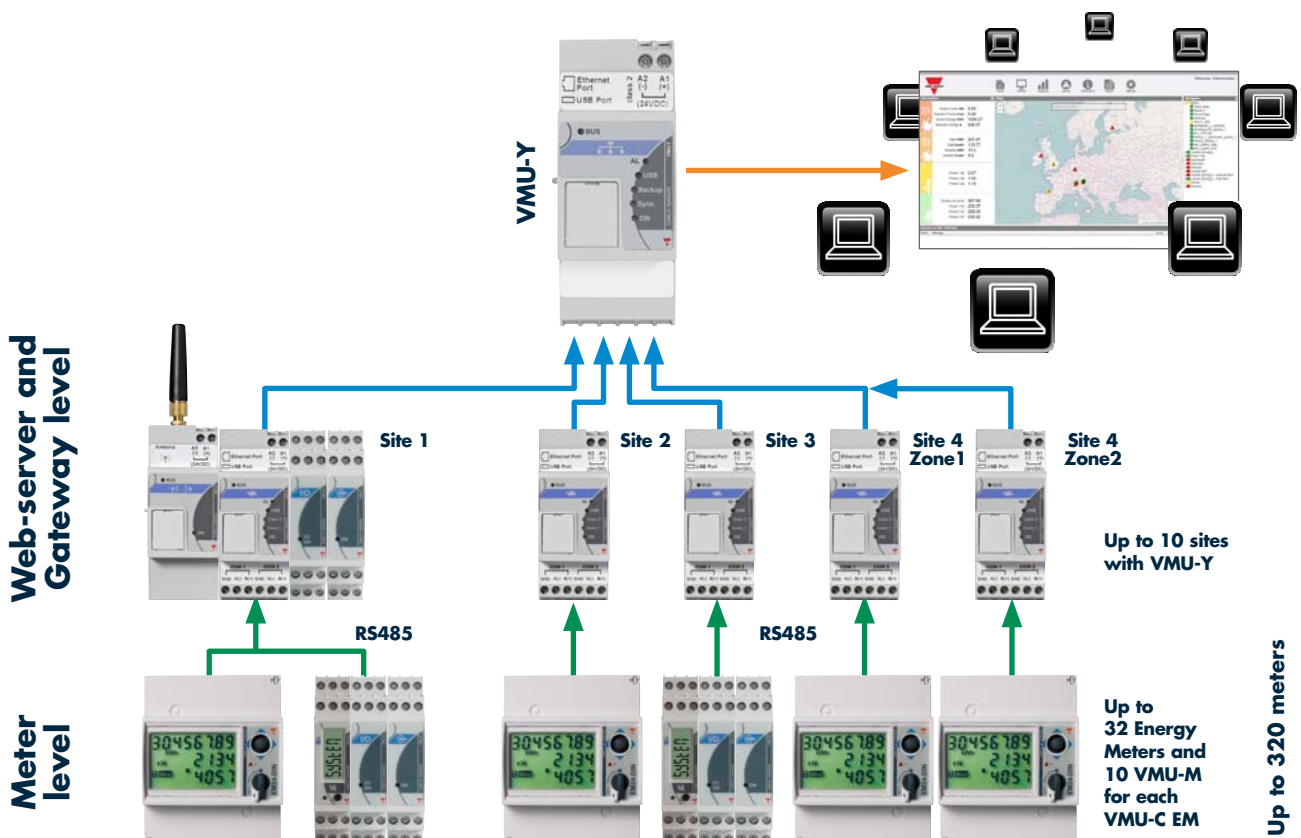
VMU-Y EM embeds in a compact 2-DIN module a comprehensive multi-site energy management database and software, without the need of installing any software and operating any IT infrastructure: just set up the network interface and configure the link from VMU-C EM.

#### Mobile connection



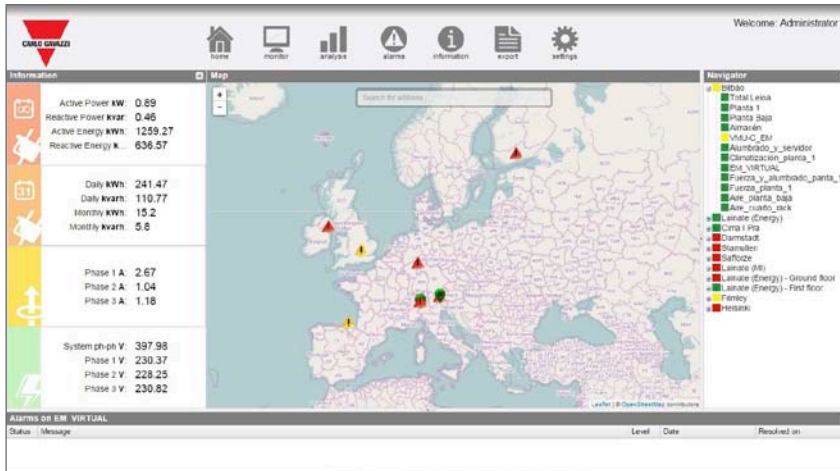
The VMU-W mobile 3G modem is available as a backup in the case the wired Internet connection fails; the mobile communication may be started up and shut down remotely by SMS commands as soon as the wired connection works again.

### VMU-Y EM multi-site solution for distributed systems



## Integrated web based interface

Concurrent access by Internet is possible by using a standard browser. User access to stored information may be allowed or restricted according to company's policies at the level of single meter.



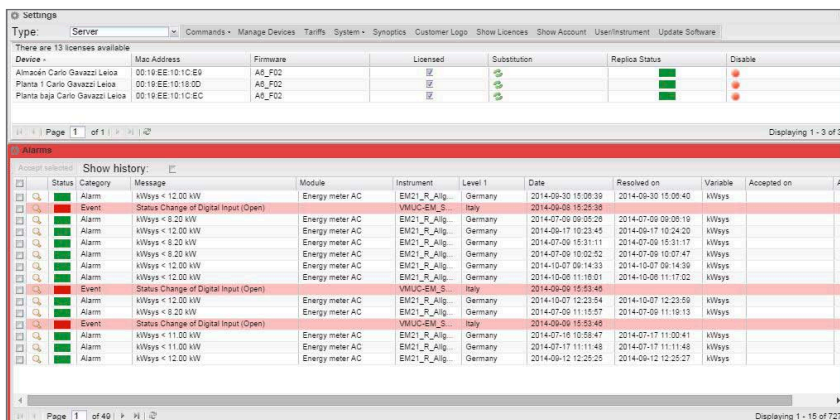
## Responsive user interface

The toolbar on the top, the Navigator on the right, the alarms view on the bottom, the main boxes on the left and the map in the center as the main tools, always available to the user for an immediate feedback



## Monitoring and analyzing

Monitor and Analysis are powerful tools which allows users to display both present and historical data from the different instruments (real energy meters, virtual energy meters, VMU-P modules) in the plant



The screenshot shows the settings and alarms management interface. It includes a 'Settings' section at the top and an 'Alarms' section below. The 'Alarms' section contains a table with the following columns: Status, Category, Message, Module, Instrument, Level, Date, Resolved on, Variable, and Accepted on. The table lists several alarms, including 'kWays < 12.00 kW', 'Status Change of Digital Input (Open)', and 'kWays < 8.20 kW'.

Status	Category	Message	Module	Instrument	Level	Date	Resolved on	Variable	Accepted on
Alarm	kWays	< 12.00 kW	Energy meter AC	EM21_R_Alg	Germany	2014-09-30 15:00:39	2014-09-30 15:09:40	kWays	
Event	Status Change of Digital Input (Open)			VMUC-EM_S	Italy	2014-09-28 15:25:38			
Alarm	kWays	< 8.20 kW	Energy meter AC	EM21_R_Alg	Germany	2014-07-09 09:05:29	2014-07-09 09:08:10	kWays	
Alarm	kWays	< 12.00 kW	Energy meter AC	EM21_R_Alg	Germany	2014-09-11 19:23:45	2014-09-11 19:24:00	kWays	
Alarm	kWays	< 8.20 kW	Energy meter AC	EM21_R_Alg	Germany	2014-07-26 15:31:11	2014-07-09 15:31:17	kWays	
Alarm	kWays	< 8.20 kW	Energy meter AC	EM21_R_Alg	Germany	2014-07-26 10:02:52	2014-07-09 10:07:47	kWays	
Alarm	kWays	< 12.00 kW	Energy meter AC	EM21_R_Alg	Germany	2014-10-07 09:14:23	2014-10-07 09:14:29	kWays	
Event	Status Change of Digital Input (Open)			VMUC-EM_S	Italy	2014-09-29 15:53:45			
Alarm	kWays	< 12.00 kW	Energy meter AC	EM21_R_Alg	Germany	2014-10-07 12:23:54	2014-10-07 12:23:59	kWays	
Event	Status Change of Digital Input (Open)			VMUC-EM_S	Italy	2014-09-29 15:53:46			
Alarm	kWays	< 11.00 kW	Energy meter AC	EM21_R_Alg	Germany	2014-07-16 10:38:47	2014-07-17 11:00:41	kWays	
Alarm	kWays	< 11.00 kW	Energy meter AC	EM21_R_Alg	Germany	2014-07-17 11:11:48	2014-07-17 11:11:48	kWays	
Alarm	kWays	< 12.00 kW	Energy meter AC	EM21_R_Alg	Germany	2014-09-12 12:25:25	2014-09-12 12:25:27	kWays	

## Portfolio management

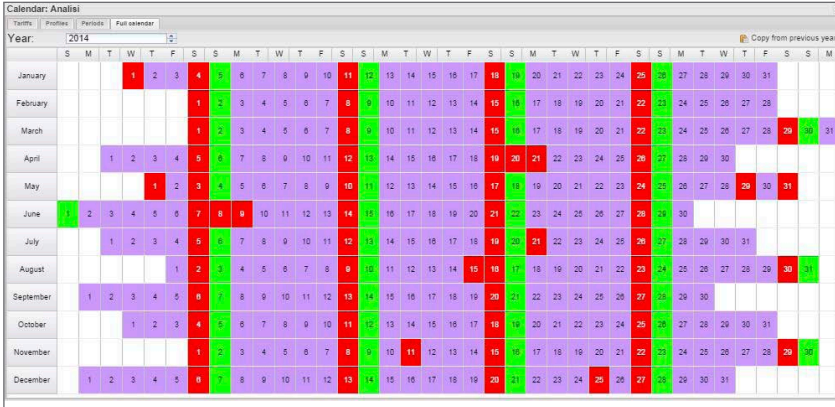
Alarms and warnings logged by the VMU-C units may be checked and acknowledged while single VMU-C status can be monitored at the same time



# VMU-Y EM

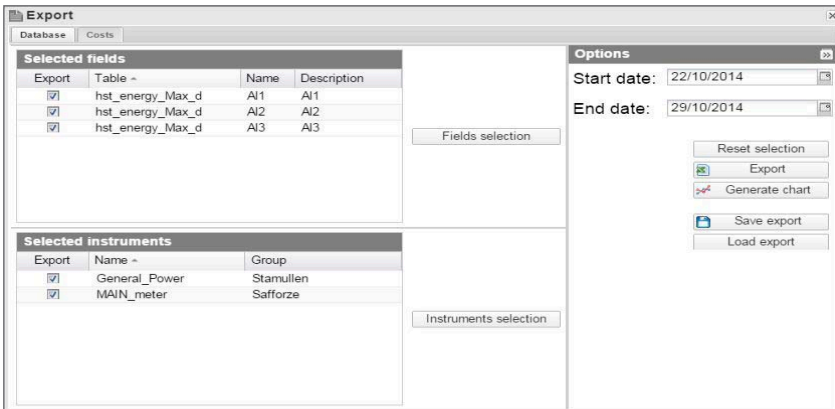
## The evolution in Energy Management

### Enhanced features for Energy Management



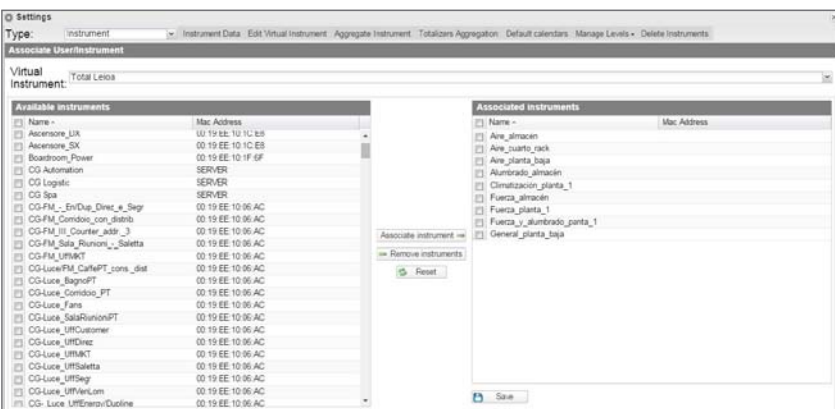
### Tariff profiling

Multiple tariffs may be set, splitting days in hourly slices, and defining calendars based on different daily profiles according to company needs; monthly cost reports are available as XLS files based on tariffs and real consumption data.



### XLS export and custom charts

It is possible to extract any combination of variables from whatever meter either as Excel file or as a customized chart; extraction profiles can be saved for later use.



### Virtual meters creation and management

It is possible to create virtual meters as aggregation of real meters, allowing to consolidate variables from multiple sources into aggregating items, with the proper authorization rights to access data.



**Improving Energy Efficiency with Carlo Gavazzi solutions**

**Energy Metering**

**EM24DIN**      **VMU-C**

GAS H<sub>2</sub>O Electricity

- EM24 DIN**, 3-phase energy analyzer:
- 5A CT or 65A direct connections;
  - DIN rail mounting;
  - 3 digital input for extra pulse counting (gas, H<sub>2</sub>O, Heating);
  - MID certified.

- EM26 96**, 3-phase energy analyzer:
- 5A CT connections;
  - panel mounting;
  - 3 digital input for extra pulse counting (gas, H<sub>2</sub>O, Heating);
  - MID certified.

**Process efficiency**

**EM26-96**      **WM30-96**      **VMU-C**

**Multi site Energy Management**

**VMU-Y**

**Em<sup>2</sup>-Server**

**Submetering**

**EM210**      **EM210**      **VMU-C**

- WM30 96**, 3-phase power quality analyzer:
- 5A CT connections;
  - Panel mounting;
  - Modular concept;
  - Class 0.2 (active energy accuracy);
  - Touch key pad.

- EM210**, 3-phase energy analyzer:
- 5A CT connection;
  - DIN rail or Panel mounting with patented detachable display;
  - self power supply;
  - MID certified (EM21);
  - Retrofit solution available (EM2172R, EM2172V).

# Em<sup>2</sup>-Server

## The evolution in Energy Management

### Cloud solution for multi-site applications

Em<sup>2</sup>-Server allows to aggregate information replicated by up to 100 VMU-C EM units within a single centralized database; information may be accessed by users from wherever by using a standard web-browser.

#### Cloud Solution



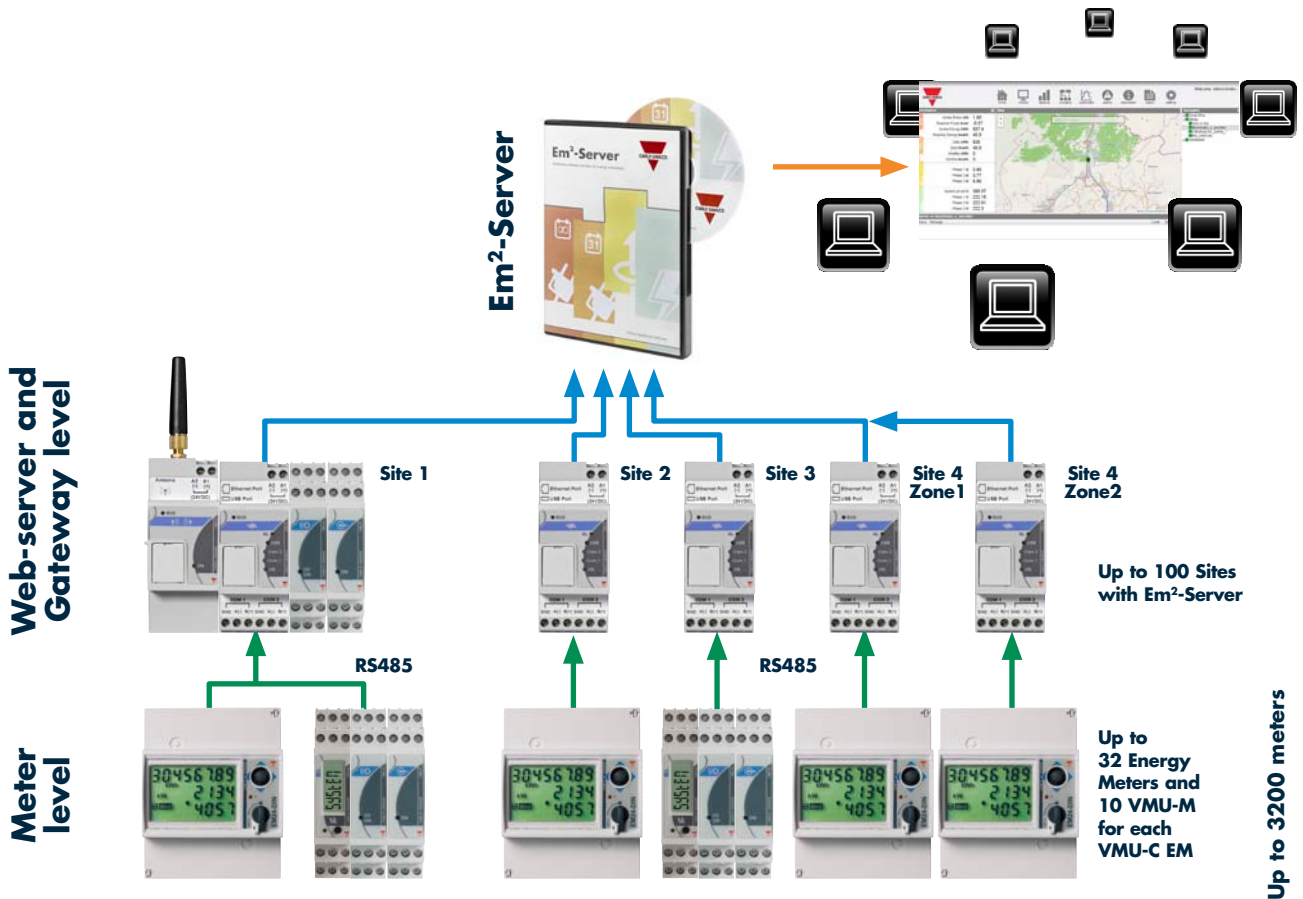
Em<sup>2</sup>-Server is a software solution provided as a Virtual Machine software appliance, to be hosted in the cloud, either in the customer's facility or in a hosting farm.

#### Centralized database



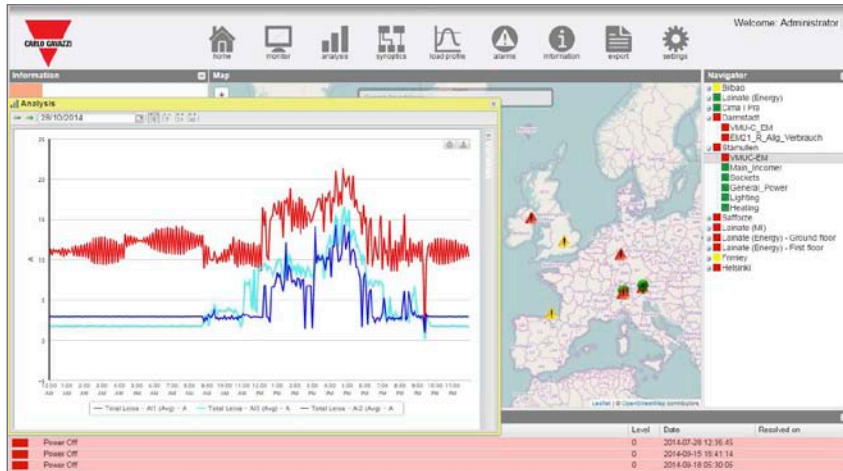
Installation and operation of Em<sup>2</sup>-Server are based on the flexibility and ease of the Virtual Machine technology. Setting up Internet communication between VMU-C EM and Em<sup>2</sup>-Server is a plug'n play process based on the reliability and effectiveness of the Carlo Gavazzi's DP(Data Push) protocol.

### Em<sup>2</sup>-Server multi-site solution for centralized data management



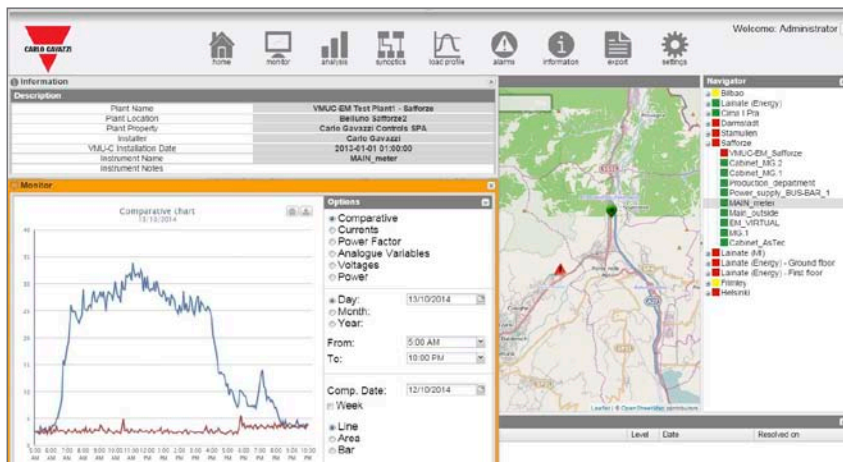
## Centralized data base and web server

Em2-Server is the solution for aggregating data from multiple installations, including the database and the web interface in the same comprehensive package.



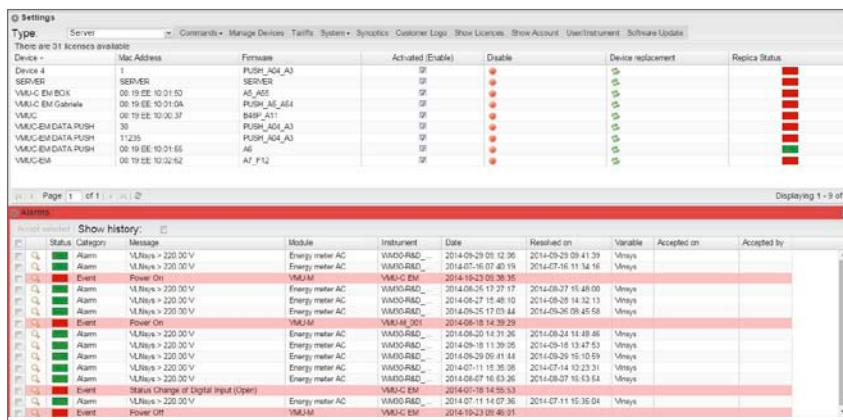
### Multiple screens, multiple views

Em2-Server's web interface allow users to match the needs of control rooms, by allowing the simultaneous displaying of different charts and information on the same monitor or on the same screens. Position and size of the desired displaying tools can be saved for later use.



### Multi-site information management

By using the Map and Navigator tools it is possible to locate information from distributed installations with ease, according to user's access rights. Present or historical values and charts are displayed according to the selected parameters and filters.



Type	Server	Commands	Manage Devices	Taiffs	System	Synopsis	Customer Logo	Show Licenses	Show Account	User/Instrument	Software Update
Device	SERVER	Mac Address	Firmware	Activated (Enable)	Disable	Device replacement	Replica Status				
VMUC EM BOX	00 19 EE 10 01 53	AS_A05	SERVER	<input type="checkbox"/>	<input type="checkbox"/>	<input type="checkbox"/>	<input type="checkbox"/>				
VMUC EM Cabinet	00 19 EE 10 01 5A	PUSH_Alg_A1	VMUC	<input type="checkbox"/>	<input type="checkbox"/>	<input type="checkbox"/>	<input type="checkbox"/>				
VMUC EM DATA PUSH	00 19 EE 10 00 37	B4B_A11	VMUC	<input type="checkbox"/>	<input type="checkbox"/>	<input type="checkbox"/>	<input type="checkbox"/>				
VMUC EM DATA PUSH	30	PUSH_Alg_A1	VMUC	<input type="checkbox"/>	<input type="checkbox"/>	<input type="checkbox"/>	<input type="checkbox"/>				
VMUC EM DATA PUSH	11235	PUSH_Alg_A1	VMUC	<input type="checkbox"/>	<input type="checkbox"/>	<input type="checkbox"/>	<input type="checkbox"/>				
VMUC EM DATA PUSH	00 19 EE 10 01 65	A6	VMUC	<input type="checkbox"/>	<input type="checkbox"/>	<input type="checkbox"/>	<input type="checkbox"/>				
VMUC EM	00 19 EE 10 02 62	AF_F12	VMUC	<input type="checkbox"/>	<input type="checkbox"/>	<input type="checkbox"/>	<input type="checkbox"/>				

Status	Category	Message	Module	Instrument	Date	Resolved on	Variable	Accepted on	Accepted by
Alarm	VMUC	VMUC > 220.0 V	Energy meter AC	VMUC-RED	2014-09-29 09:32:30	2014-09-29 09:41:39	VMUC		
Alarm	VMUC	VMUC > 220.0 V	Energy meter AC	VMUC-RED	2014-07-06 07:40:19	2014-07-16 11:34:16	VMUC		
Event	VMUC	Power On	VMUC	VMUC-EM	2014-09-23 00:30:35		VMUC		
Alarm	VMUC	VMUC > 220.0 V	Energy meter AC	VMUC-RED	2014-08-26 17:27:17	2014-08-27 15:48:00	VMUC		
Alarm	VMUC	VMUC > 220.0 V	Energy meter AC	VMUC-RED	2014-08-27 15:48:10	2014-08-28 14:32:13	VMUC		
Alarm	VMUC	VMUC > 220.0 V	Energy meter AC	VMUC-RED	2014-08-26 17:03:44	2014-08-26 09:48:58	VMUC		
Event	VMUC	Power On	VMUC	VMUC-001	2014-08-18 14:39:29		VMUC		
Alarm	VMUC	VMUC > 220.0 V	Energy meter AC	VMUC-RED	2014-08-20 14:31:36	2014-08-21 11:48:46	VMUC		
Alarm	VMUC	VMUC > 220.0 V	Energy meter AC	VMUC-RED	2014-08-18 11:29:55	2014-08-18 13:47:53	VMUC		
Alarm	VMUC	VMUC > 220.0 V	Energy meter AC	VMUC-RED	2014-09-29 09:41:44	2014-09-29 10:10:59	VMUC		
Alarm	VMUC	VMUC > 220.0 V	Energy meter AC	VMUC-RED	2014-07-11 19:35:58	2014-07-14 10:23:31	VMUC		
Alarm	VMUC	VMUC > 220.0 V	Energy meter AC	VMUC-RED	2014-08-07 16:52:36	2014-08-27 16:53:54	VMUC		
Event	VMUC	Status change of Digital Input (open)	VMUC	VMUC-EM	2014-01-26 14:59:53		VMUC		
Alarm	VMUC	VMUC > 220.0 V	Energy meter AC	VMUC-RED	2014-07-11 14:07:36	2014-07-11 15:35:04	VMUC		
Event	VMUC	Power Off	VMUC	VMUC-EM	2014-10-23 09:46:01		VMUC		

### Devices' status and installations' alerts monitoring

Dedicated tools allow user to immediately check if any abnormal situation or unexpected condition is affecting the monitored plants and the monitoring devices. Distributed VMUC EM units can be surfed via VPN, and commands may be broadcasted to pools of units.

# Em<sup>2</sup>-Server

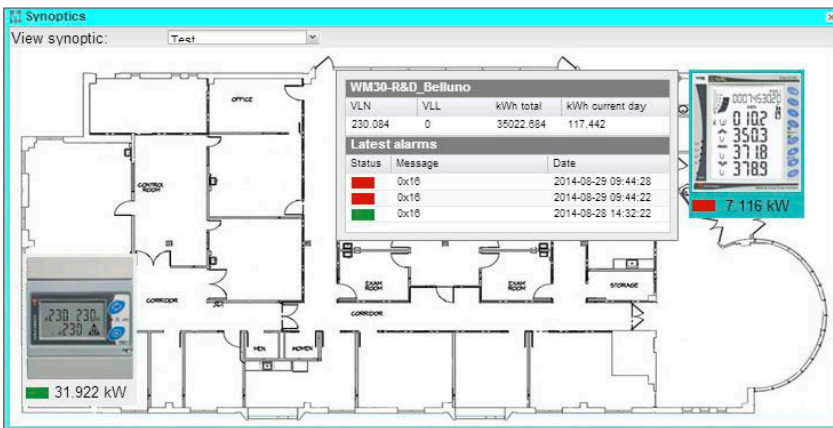
## The evolution in Energy Management

Powerful data analysis and management tools



### Tariff profiling

Multiple tariffs may be set, splitting days in hourly slices, and defining calendars based on different daily profiles according to company needs; monthly cost reports are available as XLS files based on tariffs and real consumption data.



### Synoptics

It is possible to create synoptic views as combinations of maps, diagrams, schematics and live icons representing the desired meters.



### Load profiling

The Load Profile tool allow statistical calculation of consumption in the single demand interval for the chosen interval of analysis. It is possible to estimate the typical daily consumption profile according to the desired confidence ratio.



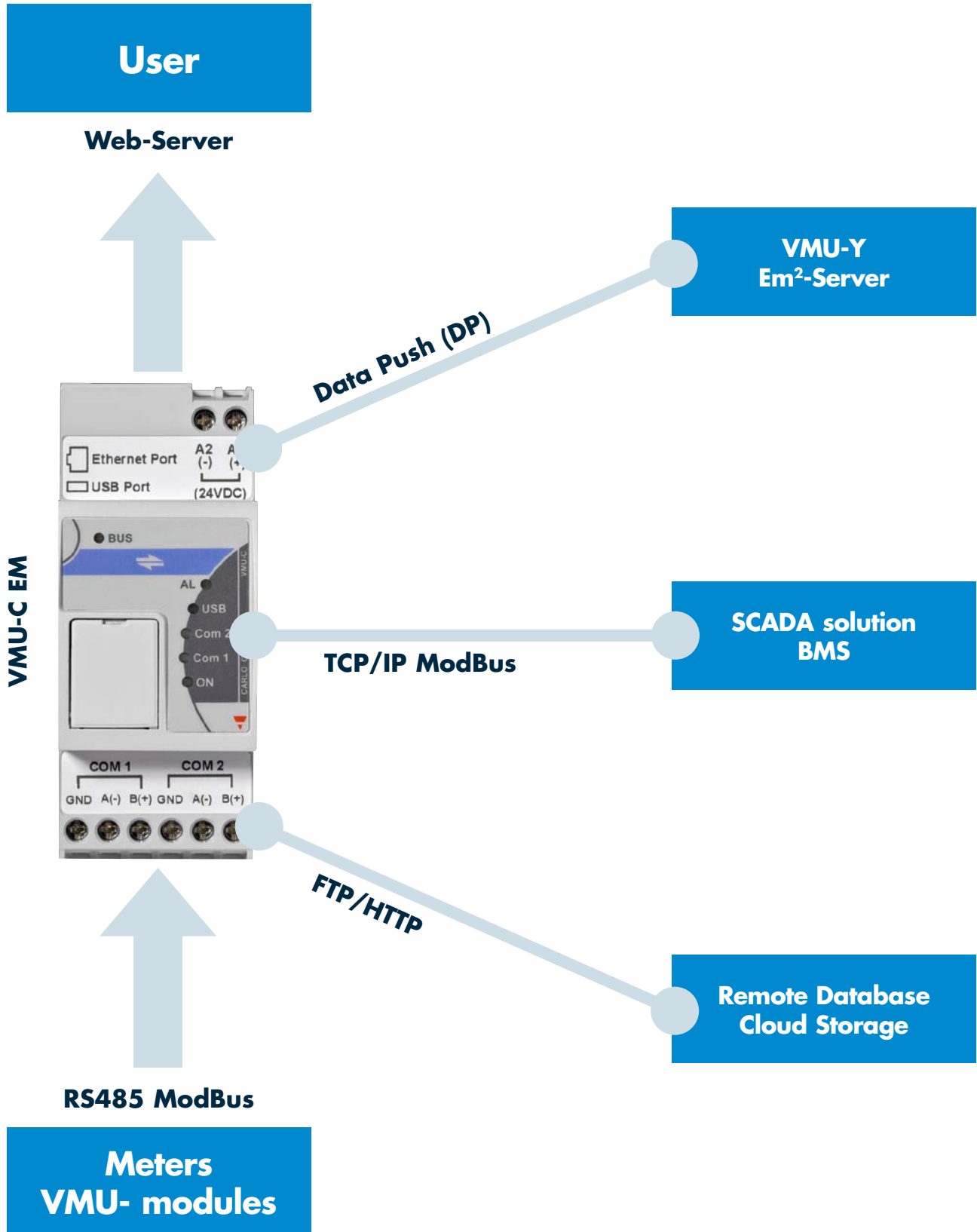
## Features matrix

Group	Feature	VMU-C EM	VMU-C EM + VMU-Y EM	VMU-C EM + Em <sup>2</sup> -Server
Installation type and scalability	Single Installation	Yes	Yes	Yes
	Multiple installations portfolio	No	UP TO 10	UP TO 100
	Number of meters	32	320	3200
	Form factor	2-DIN	2-DIN	Virtual machine
User management	User and Admin profiles (multiple users)	Yes	Yes	Yes
	Access rights management at instrument level	No	Yes	Yes
	Online Help	Yes	Yes	Yes
Variable monitoring	Variable Monitoring	Yes	Yes	Yes
	Custom Trend analysis tool	Yes	Yes	Yes
	Virtual main meter management	Yes	Yes	Yes
	Free virtual meter management	No	Yes	Yes
	Synoptic tool	No	No	Yes
	Excel data export	Fixed	Free	Free
Tariffs and costs	Tariff profiles	2	Free	Free
	Custom calendars	No	1	Free
Alarms management	Dedicated web-view	Yes	Yes	Yes
	Email	Yes	Yes	Yes
	SMS	With optional VMU-W on VMU-C	With optional VMU-W on VMU-C	With optional VMU-W on VMU-C
VMU-C remote management	SMS commands	With optional VMU-W on VMU-C	With optional VMU-W on VMU-C	With optional VMU-W on VMU-C
	Remote broadcast commands via Web interface	N/A	Yes	Yes

# VMU-C EM

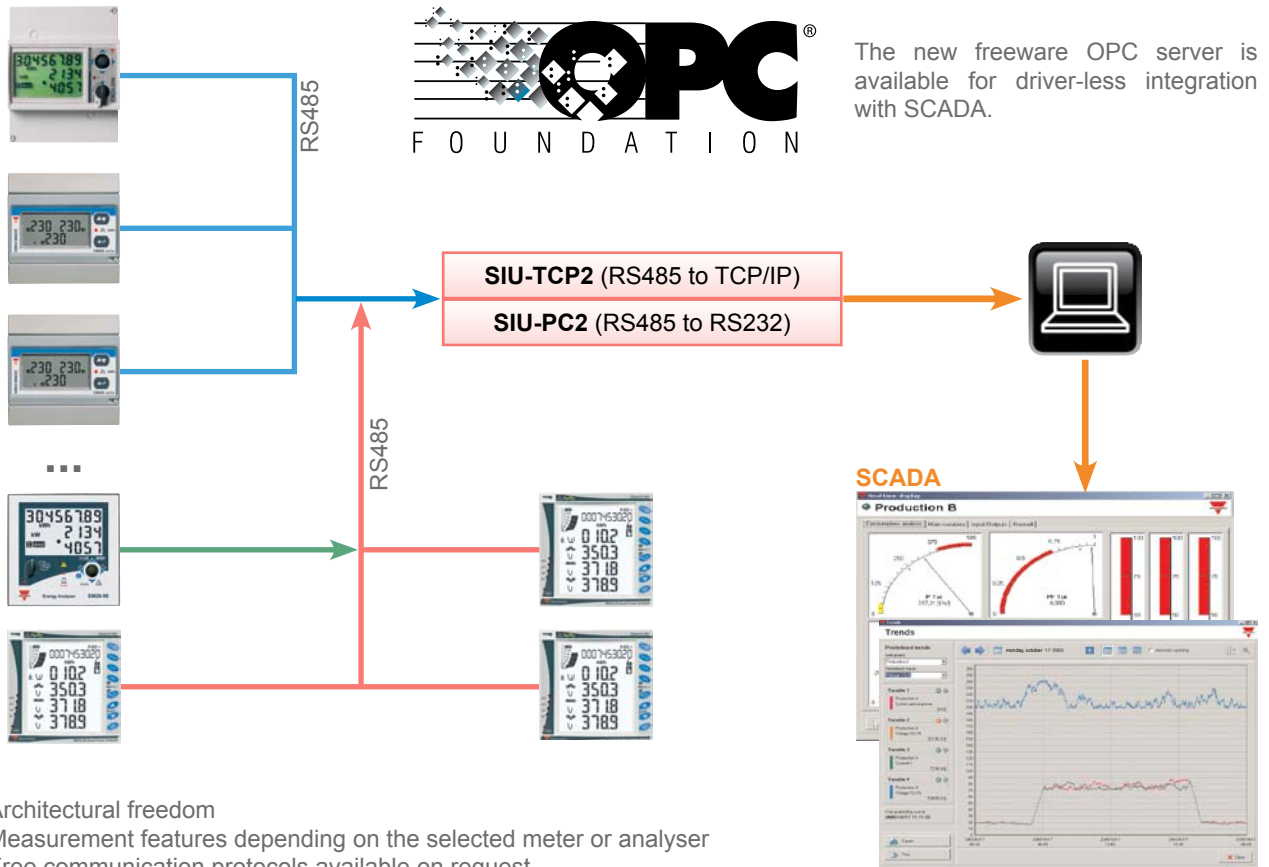
## The evolution in Energy Management

The heart of the system



## The OPC server link

### Monitoring solution based on the System Integrator's own SCADA software



- Architectural freedom
- Measurement features depending on the selected meter or analyser
- Free communication protocols available on request.

## SIU-FO: the solution for an electrically-disturbed environment

This unit converts the standard Mod-Bus communication from the RS485 wired to the fibre-optic type, with the aim to increase the communication distance and providing extremely high communication immunity in the case of an electrically -disturbed environment.

- Fibre optic dual loop communication (redundant communication: no communication loss in case of one loop cut).
- 10 to 24VDC/12 to 18VAC power supply.
- DIN-rail mounting type.

### Features

- RS485 to glass fibre optic adaptor.
- Two way communication capability (wire to fibre optics and fibre optics to wire).
- Fibre optic single loop communication (cascade connection: communication loss in the case of loop cut).
- Fibre optic dual loop communication (dual cascade connection: partial communication loss in the case of one loop cut).

### Fibre type and communication distances

- Single-mode and multimode glass fibre optic compatibility.
- Point to point distance of up to 800m with 50/125  $\mu\text{m}$  multimode fibre.
- Point to point distance of up to 2000m with 62.5/125  $\mu\text{m}$  multimode fibre.



## OUR SALES NETWORK IN EUROPE

**AUSTRIA** - Carlo Gavazzi GmbH  
Ketzergrasse 374, A-1230 Wien  
Tel: +43 1 888 4112  
Fax: +43 1 889 10 53  
office@carlogavazzi.at

**BELGIUM** - Carlo Gavazzi NV/SA  
Mechelsesteenweg 311, B-1800 Vilvoorde  
Tel: +32 2 257 4120  
Fax: +32 2 257 41 25  
sales@carlogavazzi.be

**DENMARK** - Carlo Gavazzi Handel A/S  
Over Hadstenvej 40, DK-8370 Hadsten  
Tel: +45 89 60 6100  
Fax: +45 86 98 15 30  
handel@gavazzi.dk

**FINLAND** - Carlo Gavazzi OY AB  
Petaksentie 2-4, FI-00630 Helsinki  
Tel: +358 9 756 2000  
Fax: +358 9 756 20010  
myynti@gavazzi.fi

**FRANCE** - Carlo Gavazzi Sarl  
Zac de Paris Nord II, 69, rue de la Belle  
Etoile, F-95956 Roissy CDG Cedex  
Tel: +33 1 49 38 98 60  
Fax: +33 1 48 63 27 43  
french.team@carlogavazzi.fr

**GERMANY** - Carlo Gavazzi GmbH  
Pfnorstr. 10-14  
D-64293 Darmstadt  
Tel: +49 6151 81000  
Fax: +49 6151 81 00 40  
info@gavazzi.de

**GREAT BRITAIN** - Carlo Gavazzi UK Ltd  
4.4 Frimley Business Park,  
Frimley, Camberley, Surrey GU16 7SG  
Tel: +44 1 276 854110  
Fax: +44 1 276 682140  
sales@carlogavazzi.co.uk

**ITALY** - Carlo Gavazzi SpA  
Via Milano 13, I-20020 Lainate  
Tel: +39 02 931 761  
Fax: +39 02 931 763 01  
info@gavazziacbu.it

**NETHERLANDS** - Carlo Gavazzi BV  
Wijkemeerweg 23,  
NL-1948 NT Beverwijk  
Tel: +31 251 22 9345  
Fax: +31 251 22 60 55  
info@carlogavazzi.nl

**NORWAY** - Carlo Gavazzi AS  
Melkeveien 13, N-3919 Porsgrunn  
Tel: +47 35 93 0800  
Fax: +47 35 93 08 01  
post@gavazzi.no

**PORTUGAL** - Carlo Gavazzi Lda  
Rua dos Jerónimos 38-B,  
P-1400-212 Lisboa  
Tel: +351 21 361 7060  
Fax: +351 21 362 13 73  
carlogavazzi@carlogavazzi.pt

**SPAIN** - Carlo Gavazzi SA  
Avda. Iparraguirre, 80-82,  
E-48940 Leioa (Bizkaia)  
Tel: +34 94 480 4037  
Fax: +34 94 431 6081  
gavazzi@gavazzi.es

**SWEDEN** - Carlo Gavazzi AB  
V:a Kyrkogatan 1,  
S-652 24 Karlstad  
Tel: +46 54 85 1125  
Fax: +46 54 85 11 77  
info@carlogavazzi.se

**SWITZERLAND** - Carlo Gavazzi AG  
Verkauf Schweiz/Vente Suisse  
Sumpfstrasse 3,  
CH-6312 Steinhausen  
Tel: +41 41 747 4535  
Fax: +41 41 740 45 40  
info@carlogavazzi.ch

## OUR SALES NETWORK IN THE AMERICAS

**USA** - Carlo Gavazzi Inc.  
750 Hastings Lane,  
Buffalo Grove, IL 60089, USA  
Tel: +1 847 465 6100  
Fax: +1 847 465 7373  
sales@carlogavazzi.com

**CANADA** - Carlo Gavazzi Inc.  
2660 Meadowvale Boulevard,  
Mississauga, ON L5N 6M6, Canada  
Tel: +1 905 542 0979  
Fax: +1 905 542 22 48  
gavazzi@carlogavazzi.com

**MEXICO** - Carlo Gavazzi Mexico S.A. de C.V.  
Calle La Montaña no. 28, Fracc. Los Pastores  
Naucalpan de Juárez, EDOMEX CP 53340  
Tel & Fax: +52.55.5373.7042  
mexicosales@carlogavazzi.com

**BRAZIL** - Carlo Gavazzi Automação Ltda.  
Av. Francisco Matarazzo, 1752  
Conj 2108 - Barra Funda - São Paulo SP  
CEP 01401-000  
Tel: +55 11 3052 0832  
Fax: +55 11 3057 1753  
info@carlogavazzi.com.br

## OUR SALES NETWORK IN ASIA AND PACIFIC

**SINGAPORE** - Carlo Gavazzi Automation  
Singapore Pte. Ltd.  
61 Tai Seng Avenue  
#05-06 UE Print Media Hub  
Singapore 534167  
Tel: +65 67 466 990  
Fax: +65 67 461 980  
info@carlogavazzi.com.sg

**MALAYSIA** - Carlo Gavazzi Automation  
(M) SDN. BHD.  
D12-06-G, Block D12,  
Pusat Perdagangan Dana 1,  
Jalan PJU 1A/46, 47301 Petaling Jaya,  
Selangor, Malaysia.  
Tel: +60 3 7842 7299  
Fax: +60 3 7842 7399  
sales@gavazzi-asia.com

**CHINA** - Carlo Gavazzi Automation  
(China) Co. Ltd.  
Unit 2308, 23/F.,  
News Building, Block 1, 1002  
Middle Shennan Zhong Road,  
Shenzhen, China  
Tel: +86 755 83699500  
Fax: +86 755 83699300  
sales@carlogavazzi.cn

**HONG KONG** - Carlo Gavazzi  
Automation Hong Kong Ltd.  
Unit 3 12/F Crown Industrial Bldg.,  
106 How Ming St., Kwun Tong,  
Kowloon, Hong Kong  
Tel: +852 23041228  
Fax: +852 23443689

## OUR COMPETENCE CENTRES AND PRODUCTION SITES

**DENMARK** - Carlo Gavazzi Industri A/S  
Hadsten

**MALTA** - Carlo Gavazzi Ltd  
Zejtun

**ITALY** - Carlo Gavazzi Controls SpA  
Belluno

**LITHUANIA** - Uab Carlo Gavazzi Industri Kaunas  
Kaunas

**CHINA** - Carlo Gavazzi Automation  
(Kunshan) Co., Ltd.  
Kunshan

## HEADQUARTERS

Carlo Gavazzi Automation SpA  
Via Milano, 13 - I-20020  
Lainate (MI) - ITALY  
Tel: +39 02 931 761  
info@gavazziautomation.com



**CARLO GAVAZZI**  
Automation Components

*Energy to Components!*

www.gavazziautomation.com

